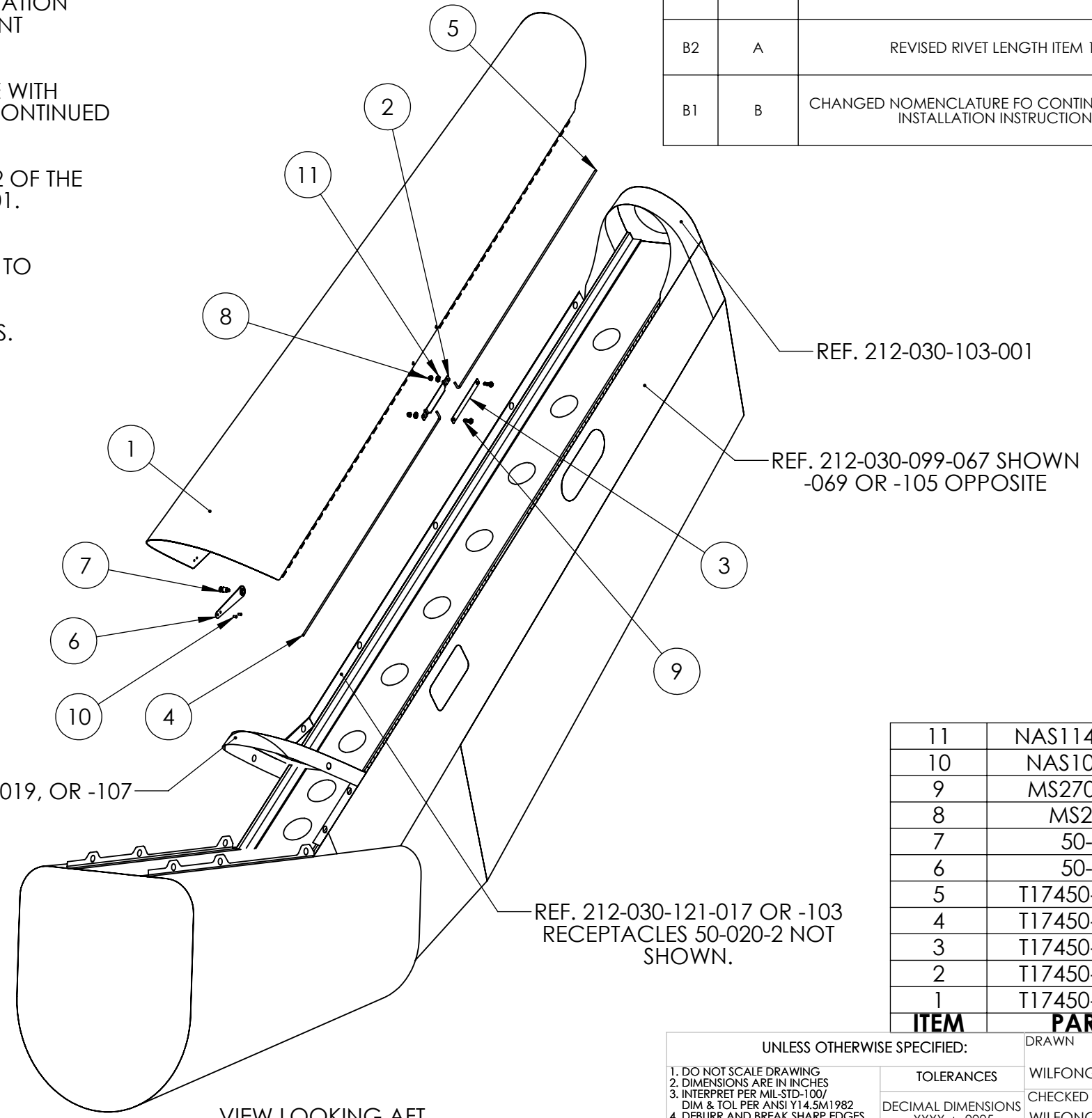


GENERAL NOTES

1. INSTALL COVER IN ACCORDANCE WITH TRINITY AVIATION SERVICES LTD. INSTALLATION INSTRUCTIONS DOCUMENT TAS-5411-101.
2. MAINTAIN COVER INSTALLATION IN ACCORDANCE WITH TRINITY AVIATION SERVICES LTD. INSTRUCTIONS FOR CONTINUED AIRWORTHINESS DOCUMENT TAS-5411-102.
3. FOR MODEL APPLICABILITY REFERENCE SECTION 1.2 OF THE INSTALLATION INSTRUCTIONS DOCUMENT TAS-5411-101.

- △ 4 STUD RECEPTACLE HOLES TO BE MATCH DRILLED TO ROTORCRAFT UPON INSTALLATION.
- △ 5 RIVET HOLES TO BE MATCH DRILLED TO EJECTORS.



REVISIONS				
ZONE	REV.	DESCRIPTION	DATE	APPROVED
B2	A	REVISED RIVET LENGTH ITEM 10.	01-NOV-2017	J WILFONG
B1	B	CHANGED NOMENCLATURE FO CONTINUITY WITH THE INSTALLATION INSTRUCTIONS	13-DEC-2017	J WILFONG



ITEM	PART NO.	NOMENCLATURE	QTY.
11	NAS1149C-0363R	WASHER	2
10	NAS1097AD4-4	RIVET	10
9	MS27039C1-09	SCREW	2
8	MS21043-3	NUT	2
7	50-019-6	STUD ASSY.	5
6	50-011-1	EJECTOR BLADE	5
5	T17450-000-0215	PIN, UPPER	1
4	T17450-000-0115	PIN, LOWER	1
3	T17450-000-0017	PLATE, RETAINER	1
2	T17450-000-0016	RETAINER	1
1	T17450-000-0010	COVER ASSY.	1

THIS DOCUMENT IS THE PROPERTY OF TRINITY AVIATION SERVICES LIMITED AND IS DELIVERED ON THE EXPRESS CONDITION THAT IT AND THE INFORMATION CONTAINED IN IT ARE NOT TO BE USED, DISCLOSED, OR REPRODUCED, IN WHOLE OR IN PART, FOR ANY PURPOSE WITHOUT THE EXPRESS WRITTEN CONSENT OF TRINITY AVIATION SERVICES LIMITED; AND THAT NO RIGHT IS GRANTED TO DISCLOSE OR SO USE ANY INFORMATION CONTAINED IN SAID DOCUMENT. THESE RESTRICTIONS DO NOT LIMIT THE RIGHT TO USE INFORMATION OBTAINED FROM ANOTHER SOURCE.

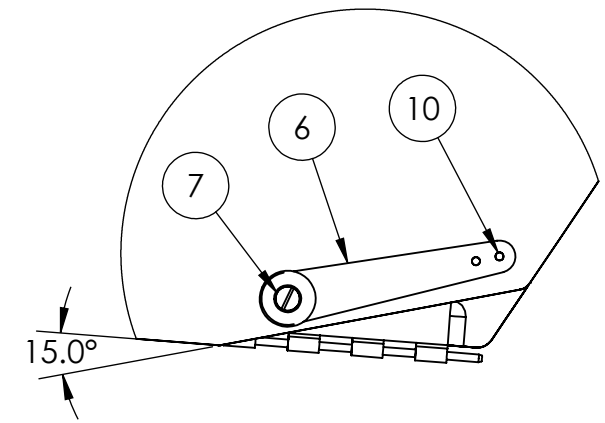
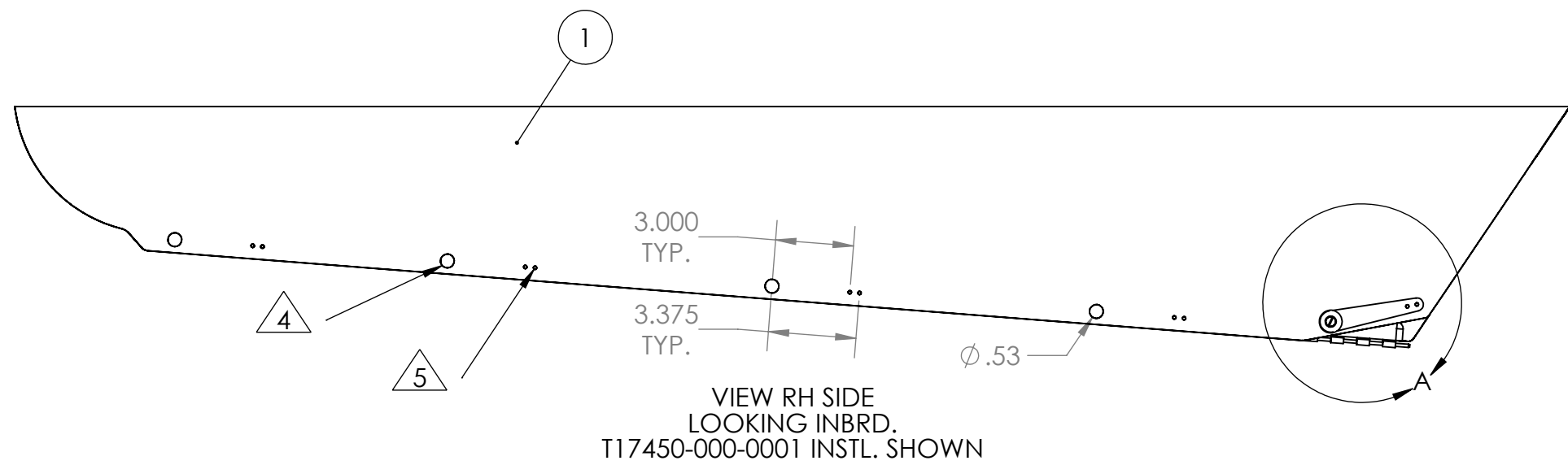
VIEW LOOKING AFT, LH SIDE INBRD.

UNLESS OTHERWISE SPECIFIED:		DRAWN	DATE	 TITLE: TAIL ROTOR DRIVESHAFT FIN COVER INSTALLATION
1. DO NOT SCALE DRAWING		WILFONG	13-SEP-2017	
2. DIMENSIONS ARE IN INCHES		CHECKED	DATE	
3. INTERPRET PER MIL-STD-100/ DIM & TOL PER ANSI Y14.5M1982		WILFONG	14-SEP-2017	
4. DEBURR AND BREAK SHARP EDGES		APPROVED	DATE	
5. DIMENSIONS APPLY BEFORE FINISHES		WILFONG	21-SEP-2017	
6. PARENTHICAL DATA IS FOR REF ONLY		THIRD ANGLE PROJECTION		
7. MACHINED SURFACE TEXTURE SHALL BE:				
TOLERANCES DECIMAL DIMENSIONS .XXXX ± .0005 .XXX ± .010 .XX ± .03 .X ± .1 ANGULAR DIMENSIONS MACHINED ± 15' LOCATING ± 15' FORMED ± 30' CHAMFERS ± 30'		CAGE NO.		
APPLICABLE SPECIFICATIONS		SCALE: 1:20		
THE ABOVE SPECIFICATIONS FORM A PART OF THIS DRAWING		SHEET 1 OF 2		

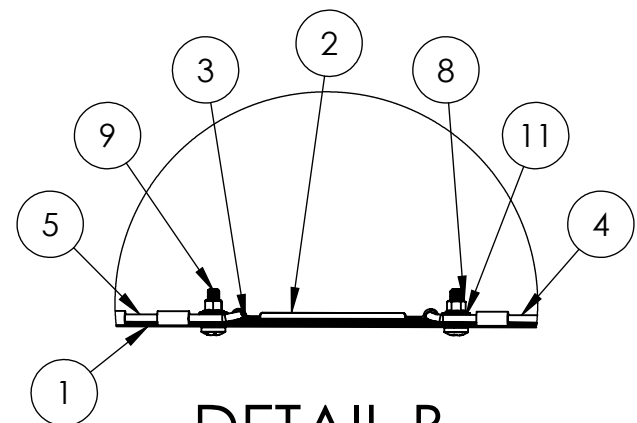
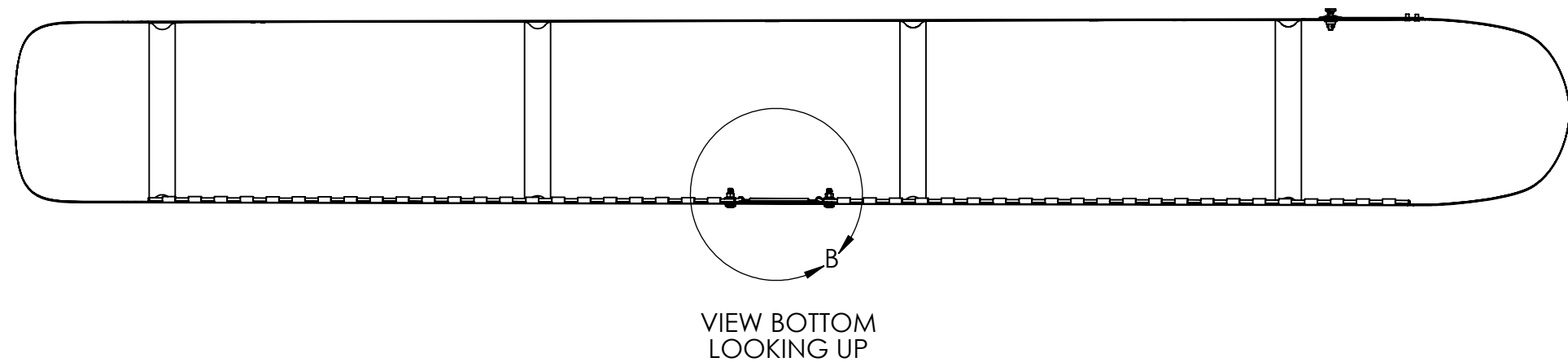
PART DASH NO.	NEXT QTY. PER ASSY.	FINAL QTY.	NEXT ASSEMBLY APPLICATION	PROJ

8 7 6 5 4 3 2 1

REVISIONS				
ZONE	REV.	DESCRIPTION	DATE	APPROVED



**DETAIL A**  
SCALE 1 : 3



**DETAIL B**  
SCALE 1 : 3

THIS DOCUMENT IS THE PROPERTY OF TRINITY AVIATION SERVICES LIMITED AND IS DELIVERED ON THE EXPRESS CONDITION THAT IT AND THE INFORMATION CONTAINED IN IT ARE NOT TO BE USED, DISCLOSED, OR REPRODUCED, IN WHOLE OR IN PART, FOR ANY PURPOSE WITHOUT THE EXPRESS WRITTEN CONSENT OF TRINITY AVIATION SERVICES LIMITED; AND THAT NO RIGHT IS GRANTED TO DISCLOSE OR SO USE ANY INFORMATION CONTAINED IN SAID DOCUMENT. THESE RESTRICTIONS DO NOT LIMIT THE RIGHT TO USE INFORMATION OBTAINED FROM ANOTHER SOURCE.

PART DASH NO.	NEXT QTY. PER ASSY.	FINAL	NEXT ASSEMBLY APPLICATION	PROJ

UNLESS OTHERWISE SPECIFIED:	
1. DO NOT SCALE DRAWING	<b>TOLERANCES</b> DECIMAL DIMENSIONS .XXX ± .005 .XX ± .010 .X ± .03 .X ± .1  ANGULAR DIMENSIONS MACHINED ± 15' LOCATING ± 15' FORMED ± 30' CHAMFERS ± 30'
2. DIMENSIONS ARE IN INCHES	
3. INTERPRET PER MIL-STD-100/ DIM & TOL PER ANSI Y14.5M1982	
4. DEBURR AND BREAK SHARP EDGES	
5. DIMENSIONS APPLY BEFORE FINISHES	
6. PARENTHICAL DATA IS FOR REF ONLY	
7. MACHINED SURFACE TEXTURE SHALL BE:	
APPLICABLE SPECIFICATIONS	
THE ABOVE SPECIFICATIONS FORM A PART OF THIS DRAWING	

DRAWN WILFONG	DATE 13-SEP-2017
CHECKED WILFONG	DATE 14-SEP-2017
APPROVED WILFONG	DATE 21-SEP-2017
THIRD ANGLE PROJECTION	
CAGE NO.	

**TRINITY**  
TRINITY AVIATION SERVICES LIMITED

TITLE:  
**TAIL ROTOR DRIVESHAFT FIN COVER INSTALLATION**

SIZE DWG. NO. REV  
**B T17450-000-100** ○

SCALE: 1:6 SHEET 2 OF 2

8 7 6 5 4 3 2 1